

The Cottages at
CENTENNIAL RANCH



William Lyon Homes
Experience the pride.

Standard Features List

Sure, you say, these model homes look great, but how much will all the extras cost me? Well, chances are a lot of those extras are not. They're included, as a quick look at our Standard Features list shows. Of course, with all this standard, just imagine the options. Better still, check them out: See the Customizing Opportunities section.

The Inside Story

- Innovative Designs at an Affordable Price
- Gated Community with Private Park
- Community Association with Protective Covenants
- Cable TV Outlet in Family Room and Master Bedroom
- Telephone Outlet in Kitchen and Master Bedroom
- Stylish Rounded Corners Throughout
- Interior Laundries with Gas Dryer Connection
 - Conveniently Located Upstairs
- Distinctive Satin Chrome Lever Doorhandles on All Doors
- White Mission Style Hand Rails
- Ceramic Tile Entry
- Custom Recessed Lighting
- Spacious Walk-In Closets in All Master Suites
- Extra Storage Space Under Stairs (select plans)
- Ten Year Limited Warranty

Kitchens To Savor

- Granite Kitchen Countertops
- Amana Stainless Steel Appliances
- Beautiful Beech Cabinetry with Crown Moulding
- Pre-Plumbed for Automatic Ice Maker
- Moen® Designer Single Lever Faucet with Veggie Sprayer

Luxurious Baths

- Separate Shower Stall at Most Master Baths
- Dual Sinks in All Master Baths
- Private Water Closet Compartment in Master Bath
- Popular Cultured Marble Countertops
- Durable Moen® Designer Faucets
- Groutless Low-Maintenance One Piece Shower/Tub Combos
 - at Secondary Baths

Water & Energy Savers

- Ultra Low-flow Toilets and Water Saver Shower Heads
- Dual-Paned, Low-E Milgard® Insulated Windows and Patio Doors
- Programmable Electronic Thermostats
- Gas Forced-Air Heating
- Ground Mounted Energy Efficient Central Air Conditioning
- 200 AMP Electrical Service
- Decorative Rocker Switches

Exterior Variety

- Front Yard Landscaping Maintained by the Community Association
- Custom Architectural Styling at Affordable Prices
- Architecturally Selected Exterior Colors and Accent Schemes
- 3 Coats Stucco System Exteriors
- Durable Concrete Eagle Tile Roofs
- Completely Enclosed Rear Yards with Wrought Iron Gate
- Embossed Steel Roll-Up Garage Doors
- Colored Concrete Pavers at All Driveways and Auto Courts
- Post Tension Slabs
- Covered & Lighted Entry
- Exterior Coach Light on Photo Cell
- Garage Door Opener

Customizing Opportunities

We know you want your home to boast its own distinct flavor. You'll see we designed the homes of The Cottages with that in mind. Still, you may be among those who want to explore the options. If so, consider these choices:

- Floorplan Variations with Dens and Lofts
- Cabinet Upgrades
- Cabinets in Laundry Area
- Flooring in Extensive Color-and-Style Selection
- Upgraded Countertop Selections
- Fireplace in Living Room
- Mirrored Wardrobe Doors
- Side Access Garage Door (select plans)
- Bathroom Door at Master Suite
- Entry Doors with Glass Inserts
- Raised Panel Interior Doors Including Bypass Doors
- Garage Door Windows
- Gas BBQ Stub Out
- Recirculating Hot Water Pump
- Soft Water Loop
- Pre-Wired for Ceiling Fan Fixtures
- Tub Enclosure in Clear or Obscure Glass at Secondary Bath
- Acrylic Block or Rainglass Windows in Master Baths
- Radiant Roof Sheathing Barrier in Attic

Plan One



A

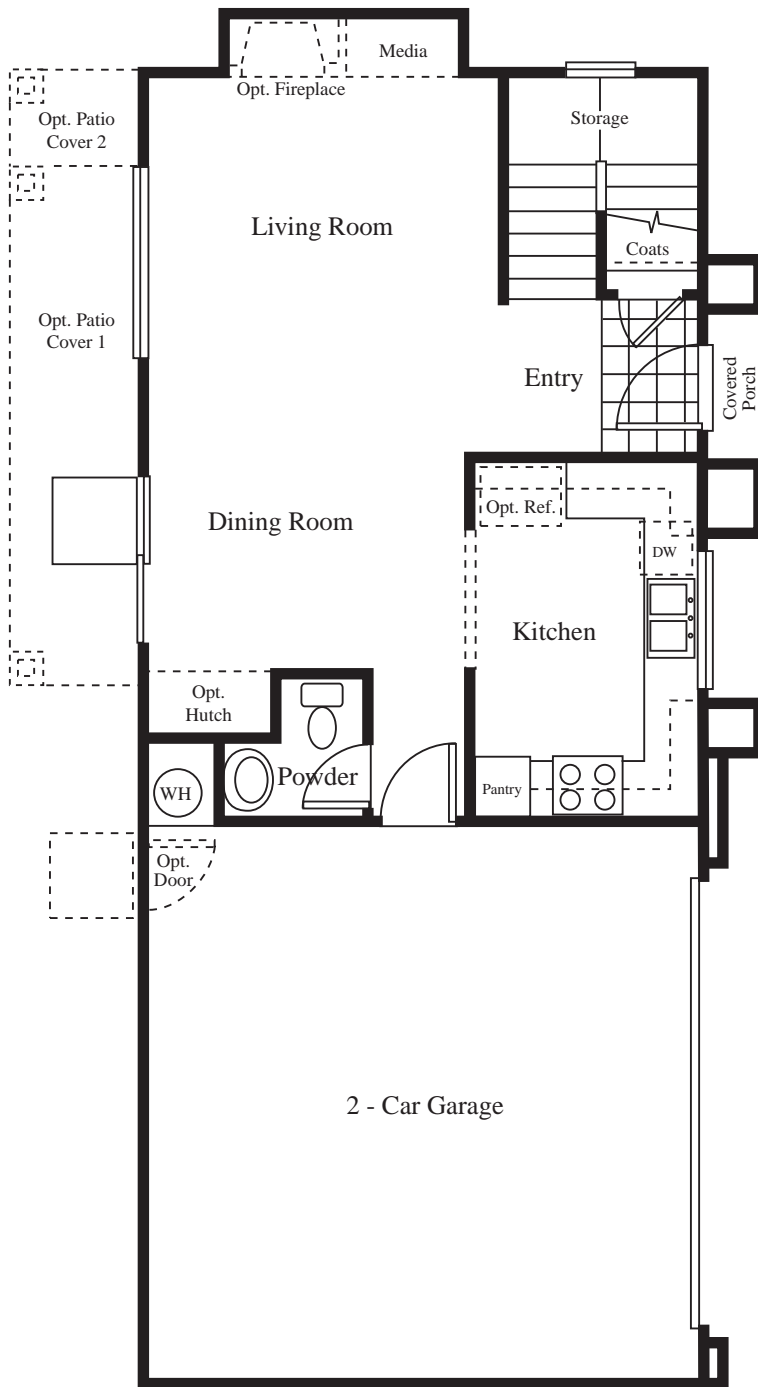


B

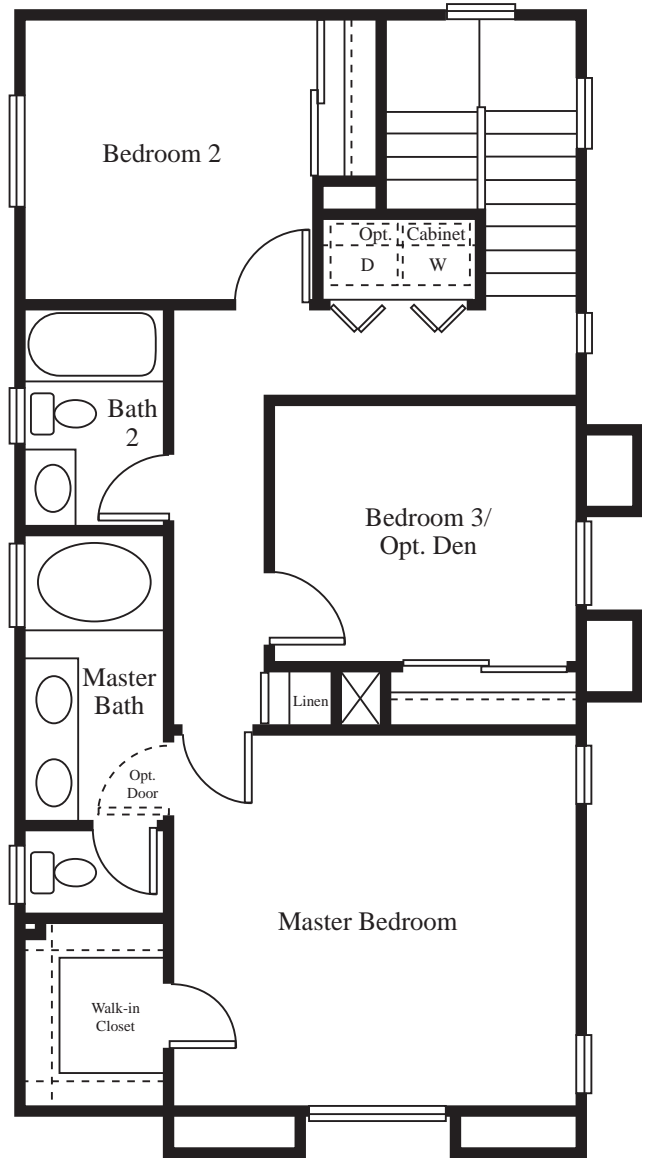


C

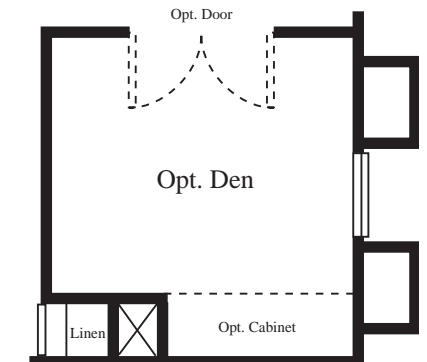
Plan One



First Floor



Second Floor



Optional Den at Bedroom 3

1,335 Sq. Ft. • 3 Bedrooms • 2 1/2 Baths • Optional Den • 2 Garage Bays

Plan Two



A

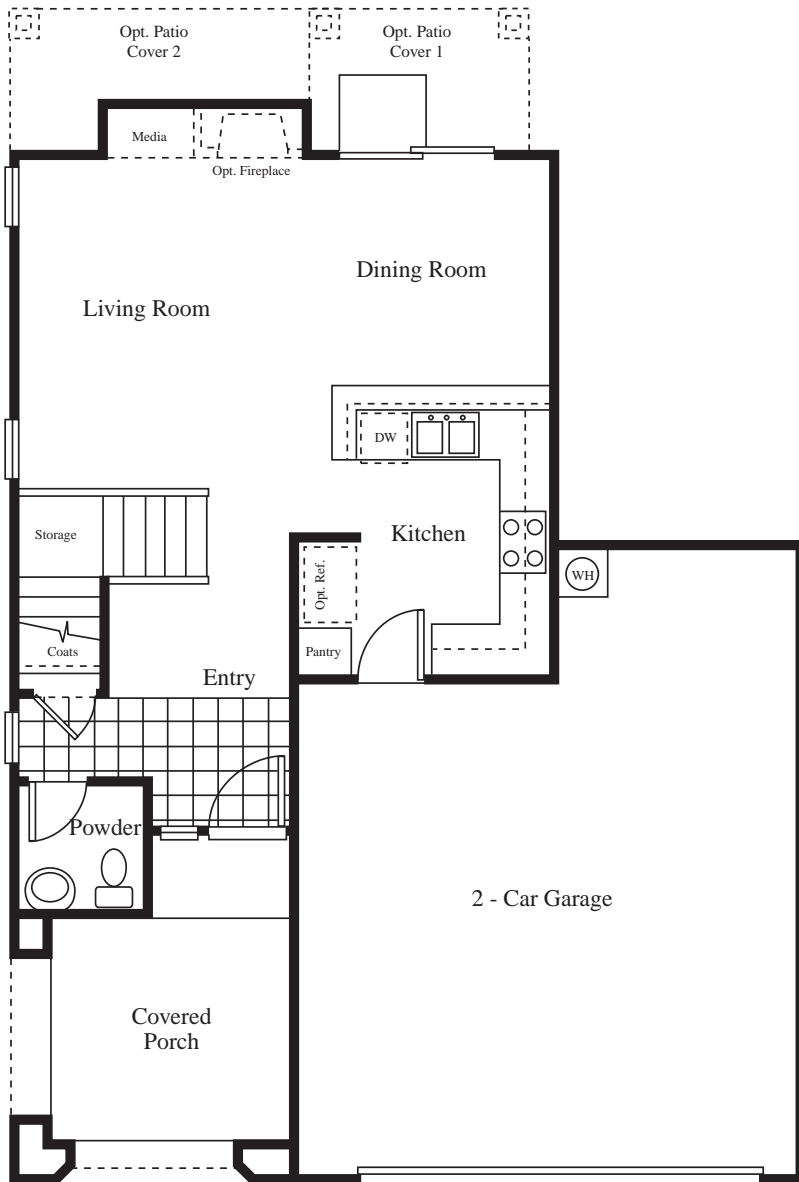


B

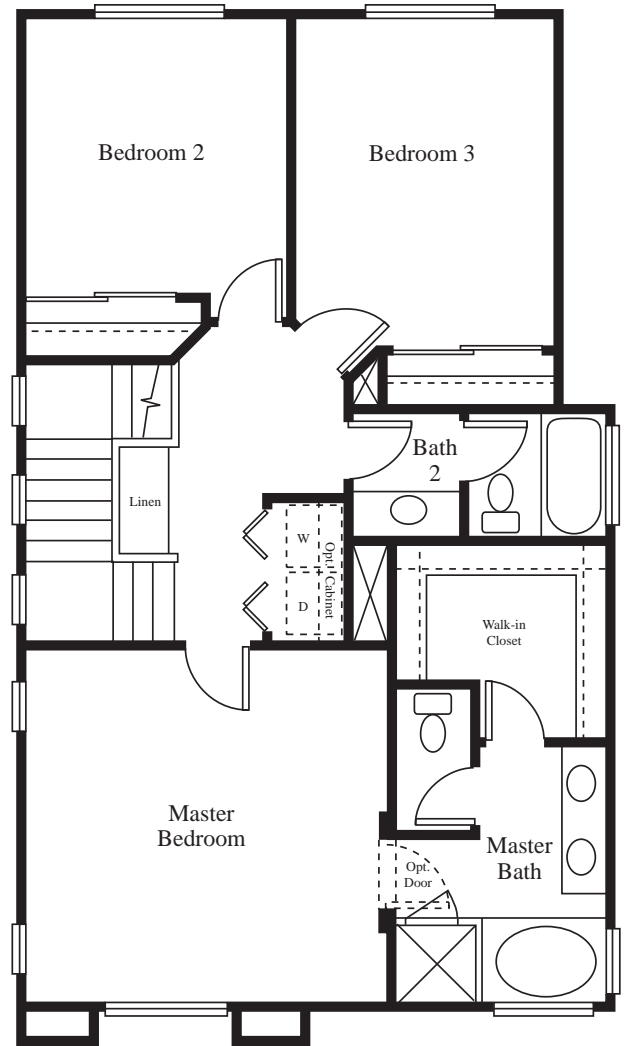


C

Plan Two



First Floor



Second Floor

1,460 Sq. Ft. • 3 Bedrooms • 2 1/2 Baths • Covered Porch • 2 Garage Bays

Plan Three



A



B

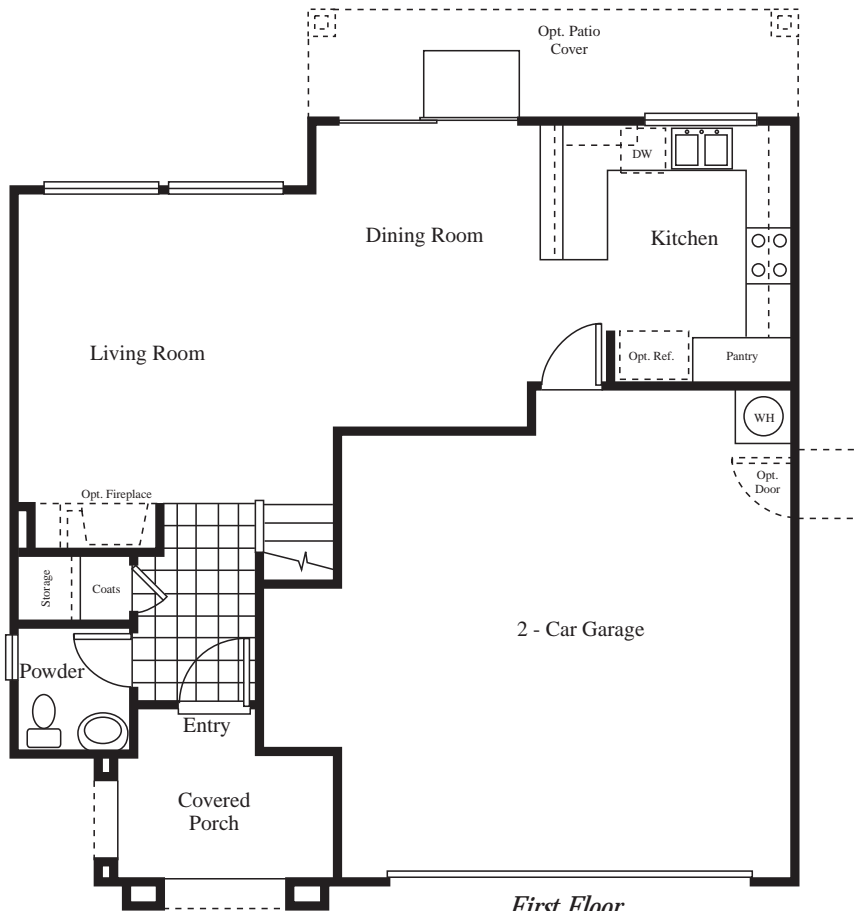


C

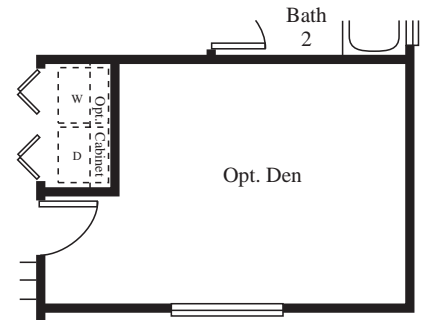
Plan Three



Second Floor



First Floor



Optional Den at Bedroom 3

1,598 Sq. Ft. • 3 Bedrooms • 2 1/2 Baths • Gallery • Optional Den • 2 Garage Bays

Plan Four



A

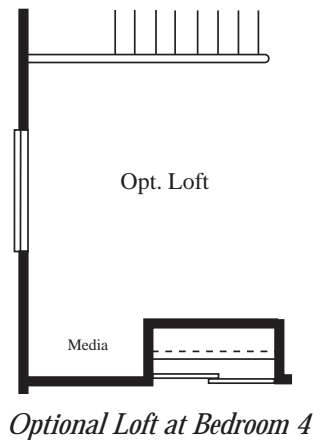
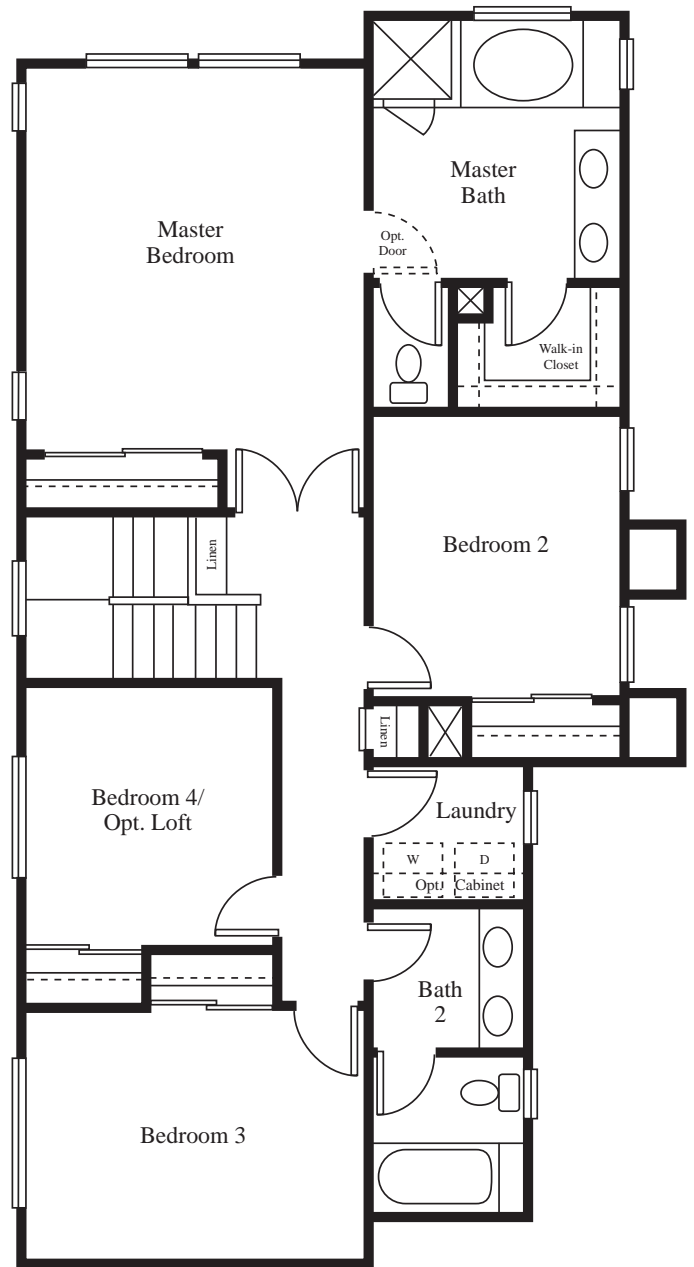
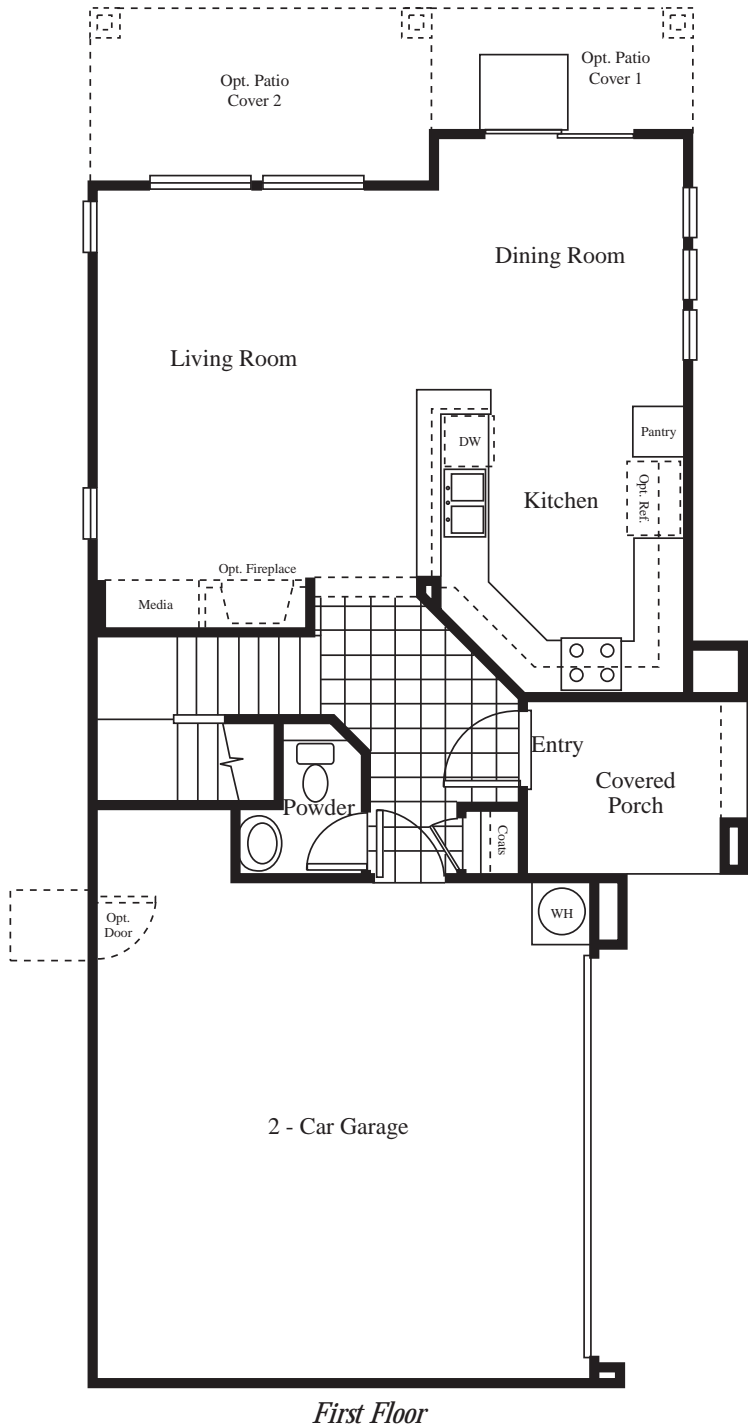


B



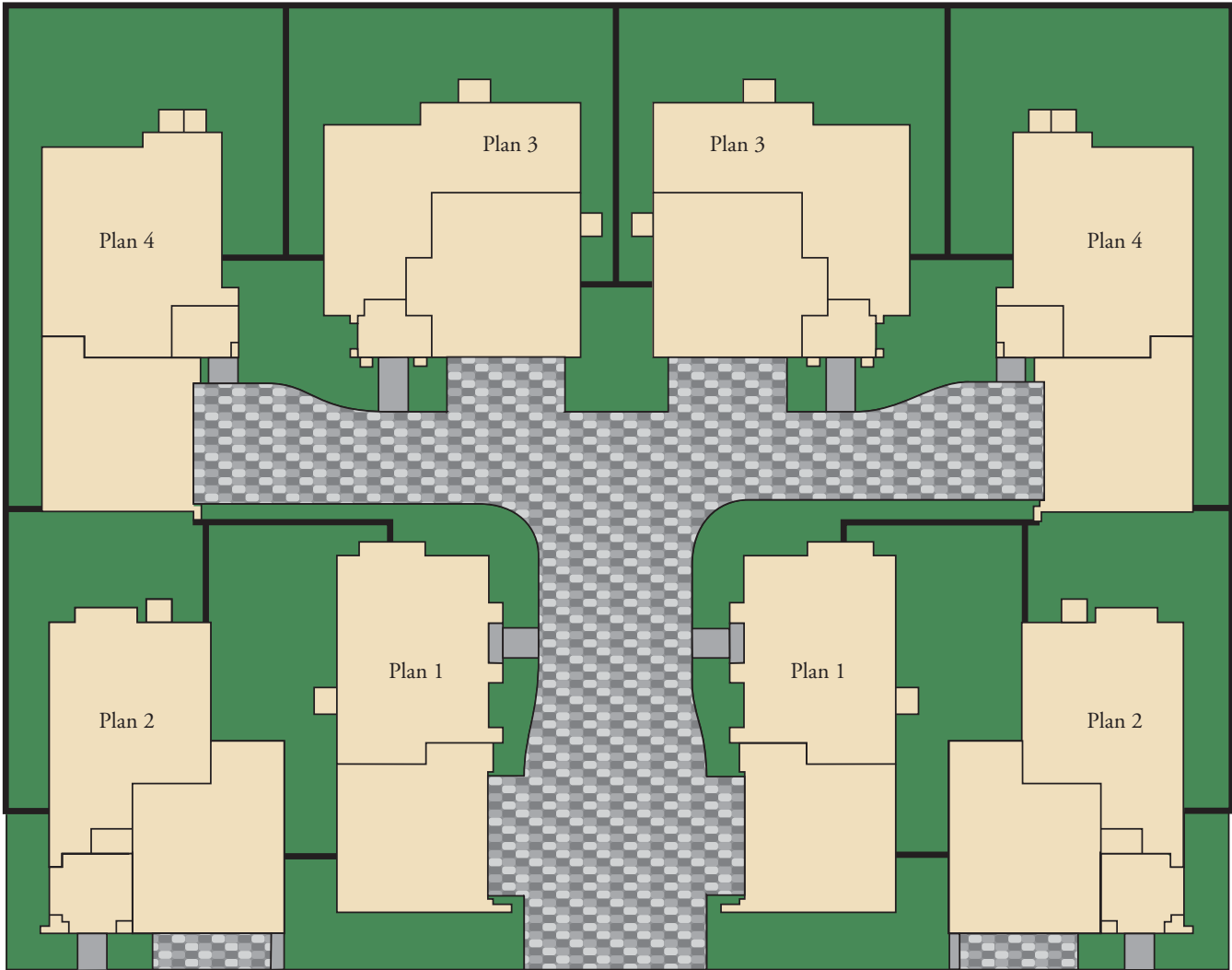
C

Plan Four



1,776 Sq. Ft. • 4 Bedrooms • 2 1/2 Baths • Laundry Room • Optional Loft • 2 Garage Bays

Typical "POD" Layout



The Cottages at
CENTENNIAL RANCH

The Cottages at
CENTENNIAL RANCH



Map not to scale.

For Information Call
(702) 586-4233 *Phone*
(702) 586-3273 *Fax*
www.lyonhomes.com

